

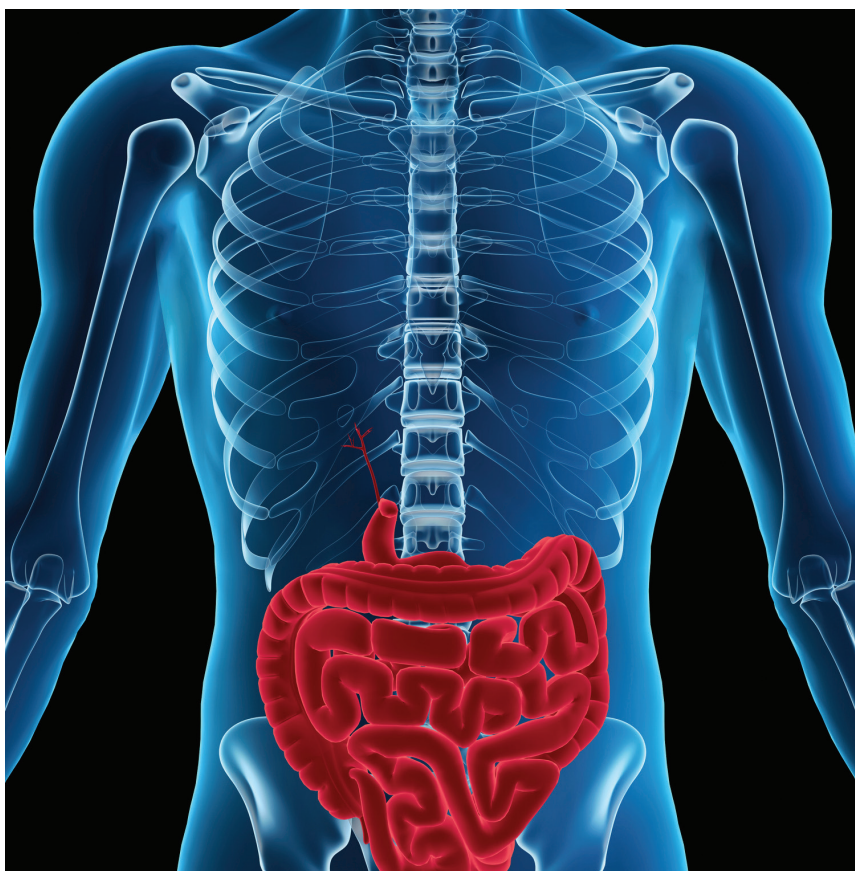


# 22nd Annual Educational Meeting in Gastroenterology

---

February 25-26, 2022

Earn CME Credits and ABIM MOC Points



## Virtual Activity

### COURSE DIRECTORS

Shelly Lu, MD

Quin Liu, MD

Mazen Nouredin, MD

Ali Rezaie, MD

Gaurav Syal, MD MHDS

For the latest course information and to register, visit  
<https://cedars.cloud-cme.com/gastroenterologycme>

# ACTIVITY INFORMATION

## COURSE DESCRIPTION AND STATEMENT OF NEED

The 22nd Annual Cedars-Sinai Educational Meeting in Gastroenterology is a unique continuing medical education virtual activity designed to provide attendees with relevant information regarding new developments in gastroenterology and new approaches for managing gastrointestinal diseases. A group of national experts will present new findings and guidelines in a clinical context that will be useful in your gastroenterology practice. This two-day virtual activity is intended for gastroenterologists and all other healthcare professionals who treat patients with gastrointestinal disorders. In addition to lecture-format presentations, the course will include the following interactive virtual instructional formats: debate and panel discussions, Q & A sessions, case discussions and interactive video presentations.

## TARGET AUDIENCE

Specialties – Family/General Medicine, Gastroenterology, Hepatology, Internal Medicine

## ACCREDITATION STATEMENT

Cedars-Sinai Medical Center is accredited by the Accreditation Council for Continuing Medical Education to provide continuing medical education for physicians.

## CREDIT DESIGNATION STATEMENT

Cedars-Sinai Medical Center designates this live activity for a maximum of 12.50 AMA PRA Category 1 Credits™. Physicians should claim only the credit commensurate with the extent of their participation in the activity.

## NON-PHYSICIAN ATTENDANCE

A certificate of participation will be provided to other health-care professionals requesting credits. Participants should ensure in advance that their credentialing or licensing organization accepts AMA PRA Category 1 Credits™.

## AMERICAN BOARD OF INTERNAL MEDICINE (ABIM) MOC RECOGNITION STATEMENT

Successful completion of this CME activity, which includes participation in the evaluation component, enables the participant to earn up to 12.5 Medical Knowledge MOC points in the American Board of Internal Medicine’s (ABIM) Maintenance of Certification (MOC) program. It is the CME activity provider’s responsibility to submit participant completion information to ACCME for the purpose of granting ABIM MOC credit.

# REGISTRATION FEES

|                     |      |
|---------------------|------|
| Physicians          | \$50 |
| Non-Physicians      | \$50 |
| Residents/Fellows   | FREE |
| Cedars-Sinai Nurses | FREE |

To register, visit <https://cedars.cloud-cme.com/gastroenterologycme>

# AGENDA

Friday, February 25, 2022

8:00AM - 8:25AM Virtual exhibit

## Virtual IBD Session

|                   |   |  |
|-------------------|---|--|
| 8:30AM - 8:40AM   | Intro and pre-test questions  | Edward Feldman, MD   |
| 8:40AM - 9:00AM   | What's new regarding SARS-Cov2 infection and vaccination in IBD   | Gil Melmed, MD MS  |
| 9:00AM - 9:20AM   | Medical-therapy-related complications in IBD  | Millie Long, MD, MPH   |
| 9:20AM - 9:40AM   | Management of the "other" colitides: Checkpoint inhibitor-induced, eosinophilic and microscopic colitis | Dermot McGovern, MD PhD<br>Shervin Rabizadeh, MD, MBA  |
| 9:40AM - 10:10AM  | Panel discussion/questions  | Edward Feldman, MD (Moderator)<br>Gil Melmed, MD MS<br>Dermot McGovern, MD PhD<br>Shervin Rabizadeh, MD, MBA<br>Millie Long, MD, MPH   |
| 10:10AM - 10:20AM | Break   |  |
| 10:20AM - 11:10AM | Case discussion covering basics of biologic therapy use in IBD  | Edward Feldman, MD (Moderator)<br>Gil Melmed, MD MS (Co-Moderator)<br>Shervin Rabizadeh, MD, MBA (Panelist)<br>Phillip Gu, MD (case presenter)<br>Stephan Targan, MD (Panelist)<br>Phillip Fleshner, MD (Panelist)<br>Millie Long, MD MPH (panelist) |
| 11:10AM - 11:20AM | Wrap up, post-test questions  | Edward Feldman, MD   |
| 11:20AM - 11:30AM | Break   |  |

## Virtual IBD Breakout Sessions

|                   |  |  |
|-------------------|--|--|
| 11:30AM - 11:50AM | 1A: Dysplasia surveillance in IBD                          | Gaurav Syal, MD MHDS<br>Karen N. Zaghiyan, MD      |
| 11:30AM - 11:50AM | 1B: Management of IBD in pregnancy                         | Nirupama Bonthala, MD<br>Sarah Kilpatrick, MD, PhD |
| 11:50AM - 12:10PM | 2A: Management of Crohn's disease before and after surgery | Eric Vasiliauskas, MD<br>Kelly Issokson, RD        |
| 11:50AM - 12:10PM | 2B: Novel treatments and their positioning in UC           | David Ziring, MD<br>Christina Ha, MD               |

## Virtual Nursing Educational Session

|                   |  |  |
|-------------------|--|--|
| 11:30AM - 12:10PM | Ostomy management and triaging IBD patients over the phone | Theodore Solomon, APRN FNP-C<br>Andrea Banty DNP FNP |
| 12:10PM - 12:55PM | Lunch and exhibits   |  |

## Virtual Endoscopy Session

|                 |   |   |
|-----------------|---|---|
| 1:00PM - 1:10PM | Intro and pre-test questions                      | Quin Liu, MD  |
| 1:10PM - 1:30PM | Virtual reality as a new tool in gastroenterology | Brennan Spiegel, MD, MSHS   |
| 1:30PM - 1:50PM | Improving Adenoma Detection Rate in colonoscopy   | Christopher Almario, MD, MSHPM  |
| 1:50PM - 2:10PM | Updates in small bowel imaging                    | Otis Stephen, MD  |
| 2:10PM - 2:25PM | Panel discussion/questions                        | Quin Liu, MD (Moderator)<br>Brennan Spiegel, MD, MSHS<br>Christopher Almario, MD, MSHPM<br>Otis Stephen, MD |
| 2:25PM - 2:40PM | Break   |   |
| 2:40PM - 3:00PM | Introduction to endobariatrics                    | Rabindra Watson, MD   |
| 3:00PM - 3:20PM | Complications of endobariatrics                   | Kenneth Park, MD  |

|                             |  |  |
|-----------------------------|--|--|
|                             |  |  |
| 3:20PM - 3:40PM             | How and who to screen for pancreatic cancer                    | Srinivas Gaddam, MD  |
| 3:40PM - 4:00PM             | New updates in the detecting and treating of pancreatic cancer | Stephen Pandol, MD   |
| 4:00PM - 4:20PM             | Endoscopic palliation for pancreatic cancer                    | Simon Lo, MD   |
| 4:20PM - 4:40PM             | Panel discussion/questions                                     | Quin Liu, MD (Moderator)<br>Rabindra Watson, MD<br>Kenneth Park, MD<br>Srinivas Gaddam, MD<br>Stephen Pandol, MD<br>Simon Lo, MD |
| 4:40PM - 4:55PM             | Review answers to questions                                    | Quin Liu, MD   |
| Saturday, February 26, 2022 |  |  |
| 8:00AM - 8:25AM             | Virtual exhibit  |  |
| Virtual Hepatology Session  |  |  |
| 8:30AM - 8:40AM             | Intro and pre-test questions                                   | Mazen Noureddin, MD  |
| 8:40AM - 9:00AM             | Acute or chronic liver failure: What do I need to know?        | Vinay Sundaram, MD   |
| 9:00AM - 9:20AM             | Updates on the managing autoimmune liver diseases              | Walid Ayoub, MD  |
| 9:20AM - 9:40AM             | Hepatocellular carcinoma updates for the gastroenterologist    | Ju Dong Yang, MD   |
| 9:40AM - 10:00AM            | Panel discussion/questions                                     | Mazen Noureddin, MD (Moderator)<br>Vinay Sundaram, MD<br>Walid Ayoub, MD<br>Ju Dong Yang, MD                                     |
| 10:00AM - 10:10AM           | Break  |  |
| 10:10AM - 10:30AM           | Liver transplant updates                                       | Alexander Kuo, MD  |
| 10:30AM - 11:10AM           | NASH Management in 2021  | Stephen Harrison, MD   |
| 11:10AM - 11:30AM           | Panel discussion/questions                                     | Mazen Noureddin, MD (Moderator)<br>Alexander Kuo, MD<br>Stephen Harrison, MD   |
| 11:30AM - 11:40AM           | Review answers to questions                                    | Mazen Noureddin, MD  |
| 11:40AM - 12:25PM           | Lunch and exhibits   |  |
| Virtual Motility Session    |  |  |
| 12:30PM - 12:40PM           | Intro and pre-test questions                                   | Ali Rezaie, MD   |
| 12:40PM - 1:10PM            | Managing eosinophilic esophagitis                              | Gary Falk, MD  |
| 1:10PM - 1:40PM             | Evolving microbiome associations with functional disorders     | Mark Pimentel, MD  |
| 1:40PM - 2:00PM             | Panel discussion/questions                                     | Ali Rezaie, MD<br>Mark Pimentel, MD<br>Gary Falk, MD   |
| 2:00PM - 2:10PM             | Break  |  |
| 2:10PM - 2:30PM             | Diagnosis and management of fecal incontinence                 | Ali Rezaie, MD   |
| 2:30PM - 2:50PM             | Udate in diagnosing and managing esophageal motility disorders | Bianca Chang, MD   |
| 2:50PM - 3:10PM -           | Managing refractory GERD                                       | Anisa Shaker, MD   |
| 3:10PM - 3:30PM             | Panel discussion/questions                                     | Ali Rezaie, MD<br>Bianca Chang, MD<br>Anisa Shaker, MD   |
| 3:30PM - 3:40PM             | Review answers to questions                                    | Ali Rezaie, MD   |

## CEDARS-SINAI COURSE DIRECTORS

### Shelly Lu, MD

Women's Guild Chair, Gastroenterology  
Vice Chair, Basic Science and Translational Research  
Director, Karsh Division of Gastroenterology and Hepatology  
Professor, Medicine  
Cedars-Sinai

### Quin Liu, MD

Assistant Professor of Medicine and Pediatrics  
Interventional Gastroenterology  
Cedars-Sinai

### Mazen Nouredin, MD

Director, Cedars-Sinai Fatty Liver Program  
Associate Professor of Medicine  
Cedars-Sinai

### Ali Rezaie, MD

Medical Director, GI Motility  
Associate Professor, Medicine  
Cedars-Sinai

### Gaurav Syal, MD MHDS

Assistant Professor of Medicine  
Inflammatory Bowel Disease Center  
Cedars-Sinai

## FACULTY PRESENTERS

### Christopher Almario, MD, MSHPM

Assistant Professor, Medicine  
Cedars-Sinai

### Walid Ayoub, MD

Associate Medical Director,  
Liver Transplantation; Professor of Medicine  
Cedars-Sinai

### Andrea Banty DNP FNP

Inflammatory Bowel Disease Center,  
Cedars-Sinai

### Nirupama Bonthala, MD

Assistant Professor of Medicine  
Inflammatory Bowel Disease Center  
Cedars-Sinai

### Bianca Chang, MD

Gastroenterologist, Assistant Professor of  
Medicine  
Cedars-Sinai

### Gary Falk, MD

Professor of Medicine  
Hospital of the University of Pennsylvania

### Edward Feldman, MD

Gastroenterologist, Professor of Medicine  
Cedars-Sinai

### Phillip Fleshner, MD

Shierley Jesslyne and Emmeline Widjaja  
Chair in Colorectal Surgery  
Director, Colorectal Surgery Research  
Professor, Surgery  
Cedars-Sinai

### Srinivas Gaddam, MD

Associate Professor of Medicine  
Interventional Gastroenterologist  
Cedars-Sinai

### Phillip Gu, MD

Advanced IBD Fellow,  
Cedars-Sinai

### Christina Ha, MD

Gastroenterologist, Associate Professor of  
Medicine  
Cedars-Sinai

### Stephen Harrison, MD, FFASLD

Visiting Professor of Hepatology  
Radcliffe Department of Medicine  
University of Oxford, UK  
Medical Director, Pinnacle Clinical Research  
San Antonio, Texas

### Kelly Issokson, RD

Registered Dietitian, Nutrition and  
Integrative IBD Program  
Cedars-Sinai

### Sarah Kilpatrick, MD, PhD

Helping Hand of Los Angeles Chair  
in Obstetrics and Gynecology  
Chair, Department of  
Obstetrics and Gynecology  
Associate Dean, Faculty Development  
Professor, Obstetrics and Gynecology  
Cedars-Sinai

### Alexander Kuo, MD

Medical Director, Liver Transplantation  
Professor of Medicine  
Cedars-Sinai

### Simon Lo, MD

Director, Pancreatic and Biliary  
Diseases Program  
F. Widjaja Family Chair in  
Digestive Diseases  
Director, Gastrointestinal Endoscopy  
Cedars-Sinai

### Millie Long, MD, MPH

Associate Professor, Department of  
Medicine  
Division of Gastroenterology and  
Hepatology  
School of Medicine  
University of North Carolina at Chapel Hill

### Christine Martin, BSN

Nurse Navigator  
Cedars Sinai

### Dermot McGovern, MD PhD

Joshua L. and Lisa Z. Greer Chair,  
Inflammatory Bowel Disease Genetics  
Professor, Medicine and Biomedical  
Sciences  
Director, Translational Research in the  
Inflammatory Bowel and Immunobiology  
Research Institute  
Cedars-Sinai

### Gil Melmed, MD MS

Director, Inflammatory Bowel Disease  
Clinical Research  
Co-Director, Clinical Inflammatory Bowel  
Disease  
Professor of Medicine  
Cedars-Sinai

### Stephen Pandol, MD

Director, Basic and Translational  
Pancreas Research  
Professor of Medicine  
Program Director, Gastroenterology  
Fellowship Program  
Cedars-Sinai

### Kenneth H Park, MD

Assistant Professor of Medicine  
Interventional Gastroenterology  
Cedars-Sinai

### Mark Pimentel, MD

Program Director, Medically Associated  
Science and Technology (MAST) Program  
Cedars-Sinai

### Shervin Rabizadeh, MD, MBA

Director, Pediatric Inflammatory Bowel  
Disease Program  
Director, Division of Pediatric  
Gastroenterology  
Medical Director, Children's Health Center  
Assistant Professor, Pediatrics  
Cedars-Sinai

### Anisa Shaker, MD

Associate Professor of Medicine  
Division of Gastrointestinal and Liver  
Diseases  
Keck School of Medicine of USC

### Theodore Solomon, APRN FNP-C

Inflammatory Bowel Disease Center,  
Cedars-Sinai

### Brennan Spiegel, MD, MSHS

Director of Health Services Research,  
Cedars-Sinai Health System  
Director, Center for Outcomes Research  
and Education (CORE)  
Professor of Medicine  
Cedars-Sinai

### Otis Stephen, MD

Associate Professor of Medicine  
Staff Physician II,  
Small Bowel Diseases and Nutrition  
Cedars-Sinai

### Vinay Sundaram, MD

Director, Hepatology Outcomes Research  
Assistant Medical Director, Liver  
Transplantation  
Associate Professor of Medicine  
Cedars-Sinai

### Stephan Targan, MD

Feintech Family Chair in Inflammatory  
Bowel Disease  
Director, F. Widjaja Foundation  
Inflammatory Bowel and Immunobiology  
Research Institute  
Distinguished Professor  
Cedars-Sinai

### Eric Vasiliauskas, MD

Associate Clinical Director,  
Inflammatory Bowel Disease Program  
Professor of Medicine and Pediatrics  
Cedars-Sinai

### Rabindra Watson, MD

Director of the Center for  
Metabolic Health  
Co-Director of Bariatric Endoscopy  
Associate Professor of Medicine  
Cedars-Sinai

### Ju Dong Yang, MD

Transplant Hepatologist,  
Assistant Professor of Medicine  
Cedars-Sinai

### Karen Zaghiyan, MD

Associate Professor of Surgery  
Cedars-Sinai

### David Ziring, MD

Associate Director,  
Pediatric Inflammatory  
Bowel Disease;  
Cedars-Sinai



8700 Beverly Blvd.  
Los Angeles, CA 90048

Non-Profit Org.  
U.S. Postage  
PAID  
Los Angeles, CA  
Permit #22328

## 22nd Annual Educational Meeting in Gastroenterology

---

February 25-26, 2022

Earn CME Credits and ABIM MOC Points

To register, visit <https://cedars.cloud-cme.com/gastroenterologycme>

Virtual Activity